

## GEI Consultants Golden Algae Screen

Prepared: June 22, 2026

Prepared By: GreenWater Laboratories/Andrew Chapman

<u>Sample ID</u>	<u>Site</u>	<u>Collected</u>
CL10-GA	Canyon Lake	17 June 2026
CL09-GA	Canyon Lake	17 June 2026
CL08-GA	Canyon Lake	17 June 2026
CL07-GA	Canyon Lake	17 June 2026

### Method

One mL aliquots of samples lightly preserved with Lugol's Iodine Solution were transferred to Utermöhl Counting Chambers and allowed to settle. To estimate *P. parvum* densities, 50 or 100 random fields were counted at 600X using a Nikon Eclipse Ti-2 Inverted Microscope equipped with phase contrast optics.

### CL10-GA

Estimated cell density of *Prymnesium parvum* (Fig. 1) was 670 cells/mL.

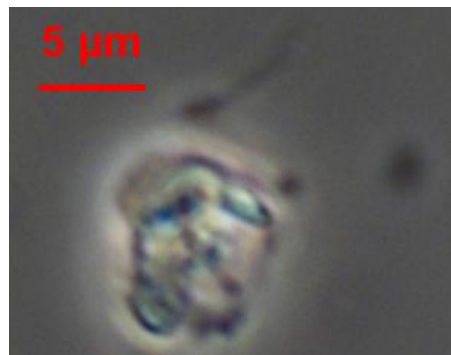


Fig. 1 *Prymnesium parvum* 600X Lugol's Preserved

### CL09-GA

Estimated cell density of *Prymnesium parvum* (Fig. 2) was 503 cells/mL.

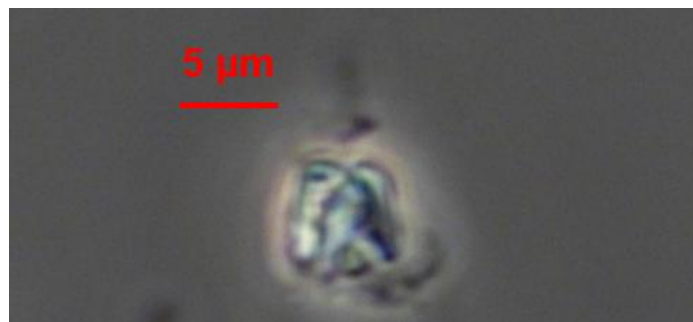


Fig. 2 *Prymnesium parvum* 600X Lugol's Preserved

## CL08-GA

Estimated cell density of *Prymnesium parvum* (Fig. 3) was 168 cells/mL.

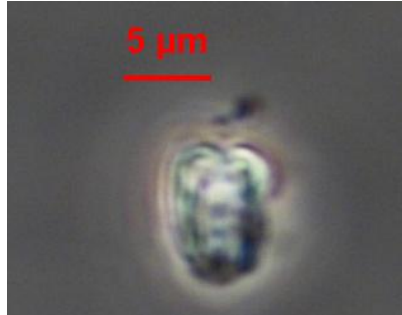


Fig. 6 *Prymnesium parvum* 600X Lugol's Preserved

## CL07-GA

Estimated cell density of *Prymnesium parvum* (Fig. 4) was 1,676 cells/mL.

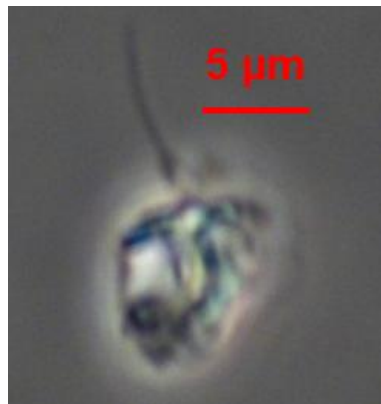


Fig. 7 *Prymnesium parvum* 600X Lugol's Preserved

Submitted by:

*Andrew D. Chapman*

Andrew D. Chapman

Date:

June 22, 2026

*The results in this report relate only to the samples listed above.*

*This report shall not be reproduced except in full without written approval of the laboratory.*