

GEI Consultants Golden Algae Screen

Prepared: June 4, 2026

Prepared By: GreenWater Laboratories/Andrew Chapman

<u>Sample ID</u>	<u>Site</u>	<u>Collected</u>
CL10-GA	Canyon Lake	2 June 2026
CL09-GA	Canyon Lake	2 June 2026
CL09-5m	Canyon Lake	2 June 2026
CL08-GA	Canyon Lake	2 June 2026
CL07-GA	Canyon Lake	2 June 2026

Method

One mL aliquots of live samples were transferred to Utermöhl Counting Chambers. Samples were scanned for the presence of Golden Algae (*Prymnidium parvum*) using a Nikon Eclipse Ti-2 Inverted Microscope equipped with phase contrast optics and epifluorescence. Additional one mL aliquots were lightly preserved with Lugol's Iodine solution, allowed to settle and 50 random fields were counted at 600X to estimate *P. parvum* densities.

CL10-GA

Estimated cell density of *Prymnidium parvum* (Fig. 1) was 5,027 cells/mL.

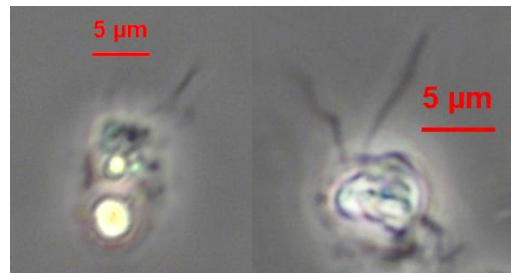


Fig. 1 *Prymnidium parvum* 600X Live (l), Lugol's Preserved (r)

CL09-GA

Estimated cell density of *Prymnidium parvum* (Fig. 2) was 2,681 cells/mL.

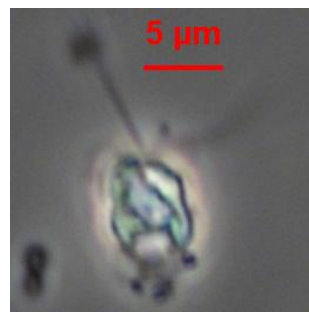


Fig. 2 *Prymnidium parvum* 600X Lugol's Preserved

CL09-5m

No *Prymnesium parvum* was observed. The sample contained abundant, large bacterial colonies (Figs. 3-4). Purple sulfur bacteria were also present indicating low oxygen conditions (Fig. 5).



Fig. 3 bacterial colonies 100X Lugol's Preserved

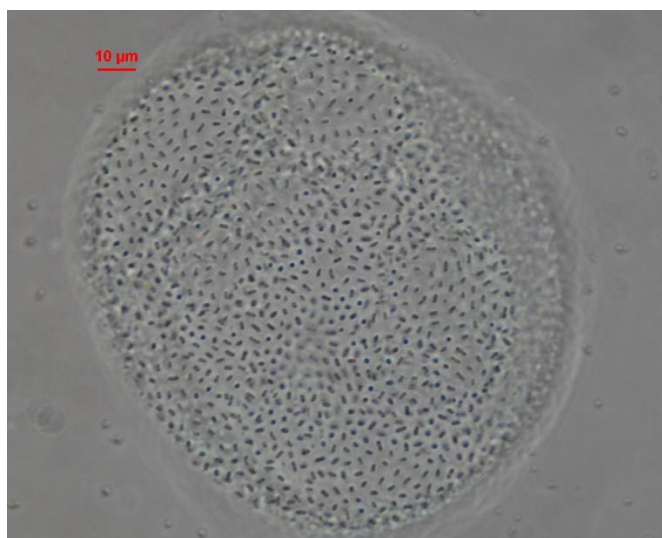


Fig. 4 bacterial colony 600X Lugol's Preserved

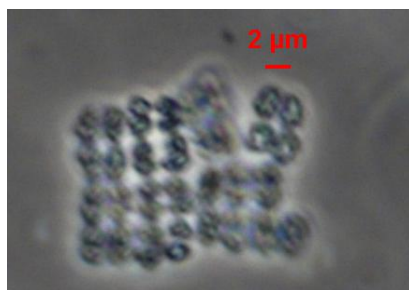


Fig. 5 *Thiopedia/Thiolamproyum* sp. 600X Lugol's Preserved

CL08-GA

Estimated cell density of *Prymnesium parvum* (Fig. 6) was 3,016 cells/mL.



Fig. 6 *Prymnesium parvum* 600X Lugol's Preserved

CL07-GA

Estimated cell density of *Prymnesium parvum* (Fig. 7) was 1,676 cells/mL.



Fig. 7 *Prymnesium parvum* 600X Lugol's Preserved

Submitted by:

Andrew D. Chapman

Andrew D. Chapman

Date:

June 4, 2026

*The results in this report relate only to the samples listed above.
This report shall not be reproduced except in full without written approval of the laboratory.*